

MIPOLAM TROPLAN

gerflor.com

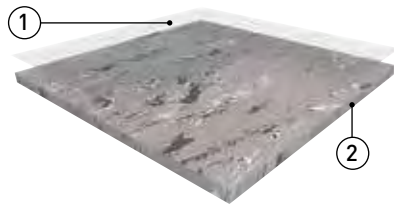


Gerflor[®]
theflooringgroup

MIPOLAM TROPLAN



 2 m	 608 x 608 mm	34-43	Evercare™	 100 % recyclable
---	--	-------	-----------	--



- ▶ High performing flexible homogeneous multipurpose flooring.
- ▶ Available in tiles or sheets.
- ▶ Directional design.

① **evercare™** treatment

② Monolayer homogeneous flooring, pressed and calendered

MIPOLAM TROPLAN is a vinyl flooring homogeneous **calendered and pressed** in 2m sheets, with a thickness of 2mm and a **weight ≤ 3300g**.

The directional design with colour throughout the thickness is available in 18 references presenting a nice **mat finish**.

This flooring is suitable for medium to high traffic areas, and facilitates floor-wall junctions, angles and welding treatments.

The flooring is equipped with **Evercare™**, patented surface treatment obtained by **UV laser cross-linking offering the best chemical resistance to the main products used in healthcare** environment as Betadine, eosin, hydro alcoholic solutions, making the maintenance easy and long lasting the flooring.

This treatment **avoids applying any acrylic emulsion** throughout the lifetime of the product.

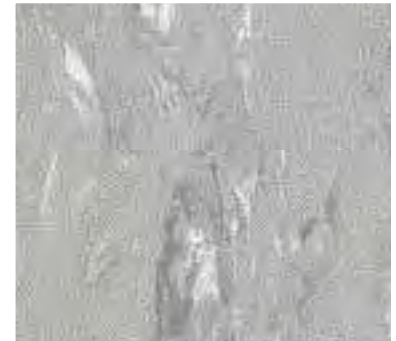
It is composed of 45% minerals, 22% of inexhaustible material and at least **25% of recycled 100% controlled**. It is free of formaldehyde, heavy metals and CMR 1 & 2 or vPvB (very persistent and very bio accumulative) or PBT (persistent, bio-accumulative and toxic) and is **REACH compliant**.

COV emissions after 28 days (ISO 16000-6) are below detection levels with $<10 \mu\text{g} / \text{m}^3$ and this product is classified A + (the best class).

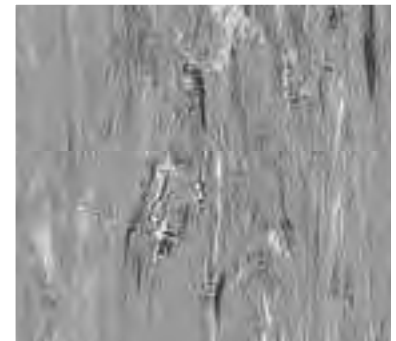
On demand, MIPOLAM COSMO is available with phthalate free.

The flooring is **antistatic** ($<2\text{kV}$), its residual indentation is $\leq 0.03 \text{ mm}$.

The flooring is a **group M** wear rating suitable for heavy duty traffic areas and **Bfl-s1** fire resistance.



1010 Grey
NCS: 3502-R / LRV: 45,6



1059 Blue Grey
NCS: 5005-R80B / LRV: 27,2



An exclusive patented technology by Gerflor.
The best chemical stain resistance surface treatment.

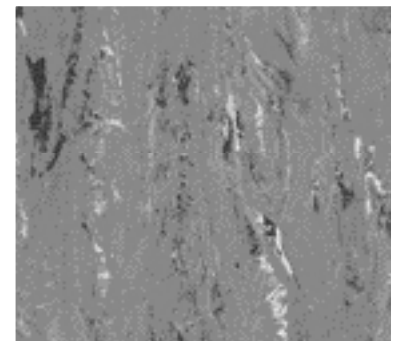
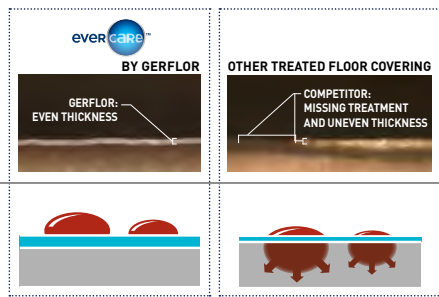
Highly Durable: Exclusive surface treatment applied by UV laser cross-linking provides superior durability and an even surface thickness, creating an impenetrable barrier against stains and chemicals found in healthcare like betadine, eosin or anti-bacterial hand gel.

Longer life expectancy.

100% non-porous surface:

The surface treatment creates a 100% non-porous barrier to all liquids and chemicals, keeping all stains floating on the surface.

Simple and easy stain removal.



1040 Dark Grey
NCS: 5502-R / LRV: 29,5



1032 Yellow
NCS: 2040-Y30R / LRV: 39,4



1055 Apricot
NCS: 3050-Y70R / LRV: 20,3



1060 Anthracite
NCS: 6502-R / LRV: 20,1



1003 Light Ocre
NCS: 1010-Y30R / LRV: 57,9



1002 Beige
NCS: 1005-Y50R / LRV: 63,9



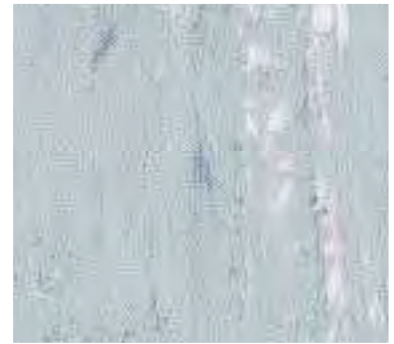
1009 Light Grey
NCS: 2000-N / LRV: 57,8



1035 Ocre
NCS: 2020-Y30R / LRV: 48,2



1007 Green
NCS: 2010-G30Y / LRV: 46,3



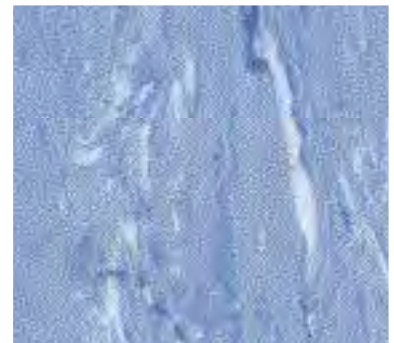
1006 Blue
NCS: 2020-R80B / LRV: 46,1



1004 Earth
NCS: 2005-Y50R / LRV: 50,4



1037 Medium Green
NCS: 2030-B90G / LRV: 34,4



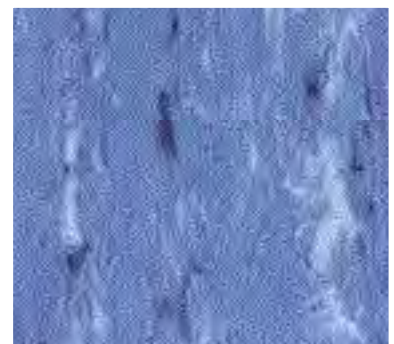
1036 Medium Blue
NCS: 2030-R80B / LRV: 36,5



1033 Brown
NCS: 3005-Y50R / LRV: 38,1



1057 Dark Green
NCS: 4020-B90G / LRV: 28,9



1056 Dark Blue
NCS: 3040-R80B / LRV: 21,1

Mipolam Troplan

DESCRIPTION / BESCHREIBUNG / DESCRIPTION / BESCHRIJVING / DESCRIPCIÓN / DESCRIÇÃO / DESCRIZIONE

Total thickness / Gesamtdicke / Epaisseur totale / Totale dikte / Espesor total / Espessura total / Spessore totale	EN ISO 24346 (EN 428)	mm	2.00
Weight / Flächengewicht / Poids / Gewicht / Peso / Peso / Peso	EN ISO 23997 (EN 430)	g/m ²	3300
Width/length of sheet / Bahnenbreite/-länge / Largeur/longueur des lés / Rolbreedte/Rollengte / Ancho/largo de rollos / Largura/comprimento dos rolos / Larghezza/lunghezza dei teli	EN ISO 24341 (EN 426)	cm/ml	200 / 20
Tile size / Format Fliesen / Format dalles / Formaat der tegels / Dimensiones de las losetas / Dimensões dos mosaicos / Dimensione delle piastre	EN ISO 24342 (EN 427)	mm	608x608*
Number of tiles per package / Nombre de dalles par boîte / Aantal tegels per doos / Cantidad de losetas/caja / Quantidade dos mosaicos/caixa / N° piastre per confezione	-	-	20

CLASSIFICATION / KLASSIFIZIERUNG / CLASSIFICATION / CLASSIFICATIE / CLASIFICACIONES / CLASSIFICAÇÕES / CLASSIFICAZIONI

Norm/product specification / Produkt Norm / Norme produit / Technische eigenschappen / Normas / Normas / Norma prodotto	-	-	EN ISO 10581 (EN 649)
European classification / Europäische Klassifizierung / Classement européen / Europese classificatie / Europea / Europea / Europea	EN ISO 10874 (EN 685)	class	34-43
Classement UPEC	NF 189	classement	U4P3E2/3C2
Certification NF UPEC	NF 189	n° certificat	332-001.1
Fire rating / Brandverhalten / Classement feu / Brand classificatie / Fuego / Fogo / Reazione al fuoco	EN 13501-1	class	Bfl - s1
Static electrical propensity / Begehauftragung / Potentiel de charge / Elektrische eigenschappen / Comportamiento electrostático / Comportamento electrostático / Resistenza elettrica	EN 1815	kV	< 2
Slip resistance wet / Rutschhemmung / Glissance humide / Anti-slip / Deslizamiento húmedo / Escorregamento húmido / Scivolosità umida ⁽¹⁾	DIN 51130	class	R9

PERFORMANCE / TECHNISCHE EIGENSCHAFTEN / PERFORMANCES / TESTRESULTAAT / CUALIDADES TÉCNICAS / PERFORMANCES/CARATTERISTICHE TECNICHE

Wear resistance / Verschleißverhalten / Résistance à l'usure / Slijtvastheid / Abrasión / Abrasão / Resistenza all'abrasione	EN 660.2	mm ³	≤ 7.5
Wear group / Verschleißgruppe / Groupe d'abrasion / Groep slijtvastheid / Grupo de abrasión / Grupo de abrasão / Gruppo di abrasione	(EN 649)	group	M
Type binder content / Bindenmittelgehalt / Teneur en agent liant	ISO 10581	type	II
Dimensional stability / Maßstabilität / Stabilité dimensionnelle / Maatvastheid / Estabilidad dimensional / Estabilidade dimensional / Stabilità dimensionale	EN ISO 23999 (EN 434)	%	sheet : ≤ 0.40 tile : ≤ 0.25
Impact sound insulation / Trittschallverbesserungsmaß / Isolation acoustique / Geluidsisolatie / Acústica / Acústica / Isolamento acustico	EN ISO 717-2	dB	4
Residual indentation / Resteindruck / Poinçonnement statique rémanent / Indrukbelasting / Punzonamiento / Imprinta	EN ISO 24343-1 (EN 433)	mm	≈ 0.03
Castor chair test / Stuhlrollenbeanspruchung / Essai de la chaise à roulettes / Rolweerstand bureaustoelen / Determinación del efecto de una silla con ruedas / Resistência a cadeiras de rodas / Resistenza al passaggio di sedie con rotelle (Type W / Typ W)	ISO 4918 (EN 425)	-	OK
Thermal conductivity / Wärmeleitfähigkeit / Conductivité thermique / Thermische weerstand / Resistencia térmica / Resistência térmica / Resistenza termica	EN ISO 10456 (EN12524)	W/(m.K)	0.25
Colour fastness / Lichtechtheit / Solidité lumière / Lichtechtheid / Resistencia a la luz / Estabilidade das cores / Solidità alla luce	EN 20 105 - B02	degree	≥ 6
Surface treatment / Oberflächenvergrütung / Traitement de surface / Oppervlaktebehandling / Tratamiento de superficie / Tratamento de superficie / Trattamento di superficie	-	-	Evercare™
Chemical resistance / Verhalten gegenüber Chemikalien / Résistance aux produits chimiques / Chemische bestendigheid / Resistencia a los productos químicos / Resistência aos produtos químicos / Resistenza ai prodotti chimici ⁽²⁾	EN ISO 26987 (EN 423)	class	OK
Anti-bacterial activity (E. coli - S. aureus - MRSA) ⁽³⁾	ISO 22196	-	> 99 % inhibits growth

ENVIRONMENT / INDOOR AIR QUALITY

TVOC after 28 days / TVOC (28 Tage) / TVOC (28 jours) / TVOC (28 dagen) / TVOC (28 dias) / TVOC (28 dias) / TVOC (28 giorni)	ISO 16000-6	µg/m ³	< 10
Certification	-	-	Floorscore™

CE marking / CE Kennzeichnung / Marquage CE / EG-conformiteitsmerk / Marca de conformidad CE / Marca de conformidade CE / Marcatura CE di conformita

CE	EN 14041	-	
	-	-	

* Products available in tiles for a minimum quantity order of 500 sqm. (1) For lifetime sustainable wet resistance, please refer to Tarasafe ranges. (2) Stain Resistance : list of chemicals available on request. (3) The implementation of an effective cleaning regime is the most important defence against infection.

INSTALLATION

Laying is the responsibility of the installer. Installation should be made in accordance with installation guidelines supplied and regularly updated by Gerflor's Technical Department. Installation should be carried out in accordance with local standards. Subfloor to be smooth, hard, clean and dry prior to laying. Where applicable the subfloor must incorporate an effective Damp Proof Membrane. The material must be allowed to acclimatise 24 hours prior to installation in a room temperature of between 18-24°C. All seams must be heat welded using Gerflor matching weld rod.

MAINTENANCE

Maintenance should be carried out regularly to retain the appearance and durability of the floor. The floor covering should be maintained with regular sweeping and damp mopping using a neutral cleaner, or auto scrubber machine with an appropriate pad.

Rubber leaves indelible stains on vinyl floorings: do not use mats with rubber backing and replace tubular furniture feet with those made of PVC or polyamide. Place mats of sufficient length at entrances to reduce outside sources of dirt. Further installation and maintenance instructions are available from Gerflor.



Committed to sustainable development

