

CONSTRUCTION Tufting 1/10" loop pile
STRUCTURE Tufté 1/10" bouclé
STRUKTUR Getuftet 1/10" Schlinge
STRUCTUUR Getuft 1/10" lussenpool

PILE MATERIAL 100% PA 6 IMPREL®
COMPOSITION DU VELOURS
POLMATERIAL
POOLMATERIAAL

PRIMARY BACKING Woven PP
SUPPORT PP tissé
TRÄGERMATERIAL PP Bändchengewebe
TUFTDOEK Woven PP

SECONDARY BACKING Action Back
DOSSIER
RÜCKEN
TAPIJTRUG

PILE WEIGHT Ca. 660 gr/m²
POIDS DU VELOURS
POLEINSATZGEWICHT
POOLGEWICHT

TOTAL WEIGHT Ca. 1.750 gr/m²
POIDS TOTAL
GESAMTGEWICHT
TOTAAL GEWICHT

PILE HEIGHT Ca. 3 mm
EPAISSEUR DU VELOURS
POLHÖHE
POOLHOOGTE

TOTAL HEIGHT Ca. 6 mm
EPAISSEUR TOTAL
GESAMTHÖHE
TOTALE DIKTE

TUFT DENSITY Ca. 224 500/m²
NOMBRES DE POINTS
NOPPENZAHL
AANTAL PUNTEN

PILE DENSITY Ca. 0.116 g/cm³
DENSITÉ DU VELOURS
POLROHDICHTÉ
POOLDICHTHEID

CLASSIFICATION EN 1307
CLASSEMENT 32 - LC1
KLASSIFIKATION
CLASSIFICATIE

UPEC U3 P3 E1 C0
 Certification CSTB: 05/216

CASTOR CHAIR SUITABILITY EN 985
CHAISE À ROULETTES A: intensive use
STUHLROLLENEIGNUNG
ROLSTOELGESCHIKTHEID

STAIR SUITABILITY EN 1963
ESCALIERS A: intensive use
TREPPENEIGNUNG
TRAPPENGESCHIKTHEID

PERMANENTLY ANTISTATIC ISO 6356
ANTISTATIQUE PERMANENT < 2 kV
PERMANENT ANTISTATISCH
PERMANENT ANTISTATISCH

IMPACT NOISE RATING ISO 140-8
ISOLATION PHONIQUE 22 dB ΔLw
TRITTSCHALLVERBESSERUNG
GELUIDSISOLATIE

SOUND ABSORPTION ISO 354
ABSORPTION PHONIQUE 0.20 αw
SCHALLABSORPTIONSGRAD
GELUIDSABSORPTIE

THERMAL RESISTANCE ISO 8302
RÉSISTANCE THERMIQUE 0.11 m² K/W
WÄRMEDURCHLASSWIDERSTAND
WARMTEDOORLAATWEERSTAND

FASTNESS TO LIGHT ISO 105-B02
SOLIDITÉ A LA LUMIÈRE ≥ 5-6
LICHTECHTHEIT
LICHTECHTHEID

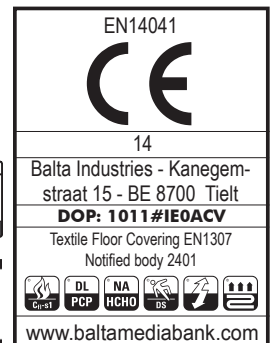
COLOUR FASTNESS TO WATER EN ISO 105-E01
SOLIDITÉ À L'EAU ≥ 4-5
WASSERRECHTHEIT
WATERECHTHEID

FIRE RESISTANCE EN 13501-1
COMPORTEMENT AU FEU Cfl-s1 (if glued)
BRENNVERHALTEN
BRANDGEDRAG

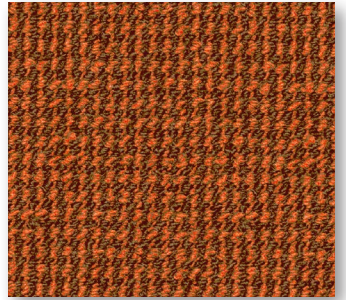
RUBBING FASTNESS EN ISO 105-X12
SOLIDITÉ AU FROTTEMENT ≥ 4
REIBECHTHEIT
WRIJFECHTHEID

NUMBER OF COLOURS 12
NOMBRES DE COULEURS
ANZAHL FARBEN
AANTAL KLEUREN

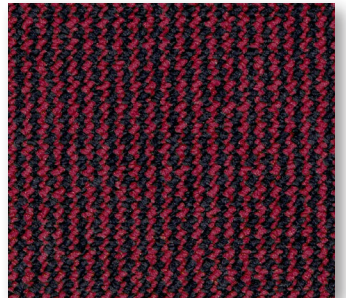
WIDTH EN ISO 3018
LARGEUR ca. 400 cm (12 colours)
BREITE ca. 500 cm (10 colours)
BREEDTE



rivoli A B



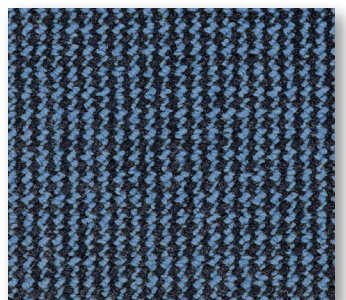
▲ 66 4 & 5 m



▲ 17 4 & 5 m



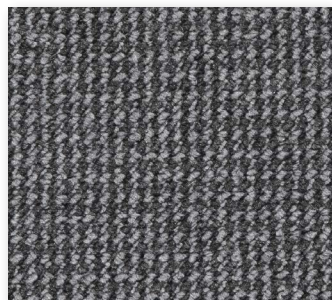
▲ 49 4 & 5 m



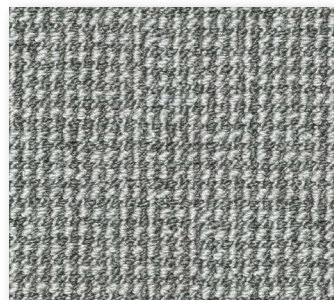
▲ 77 4 & 5 m



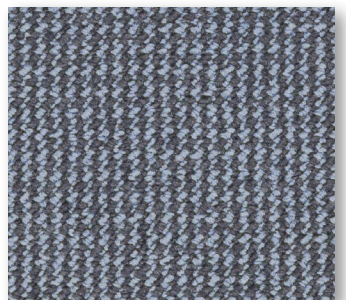
▲ 99 4 & 5 m



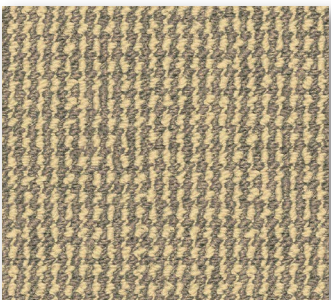
▲ 96 4 & 5 m



▲ 95 4 & 5 m



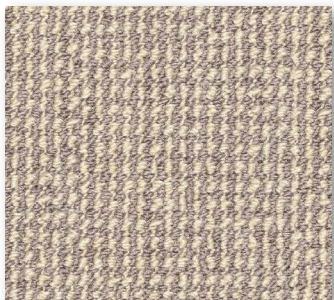
▲ 175 4 m



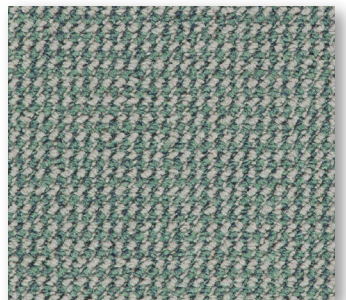
▲ 39 4 & 5 m



▲ 42 4 & 5 m



▲ 93 4 & 5 m



▲ 27 4 m

 arc **edition**